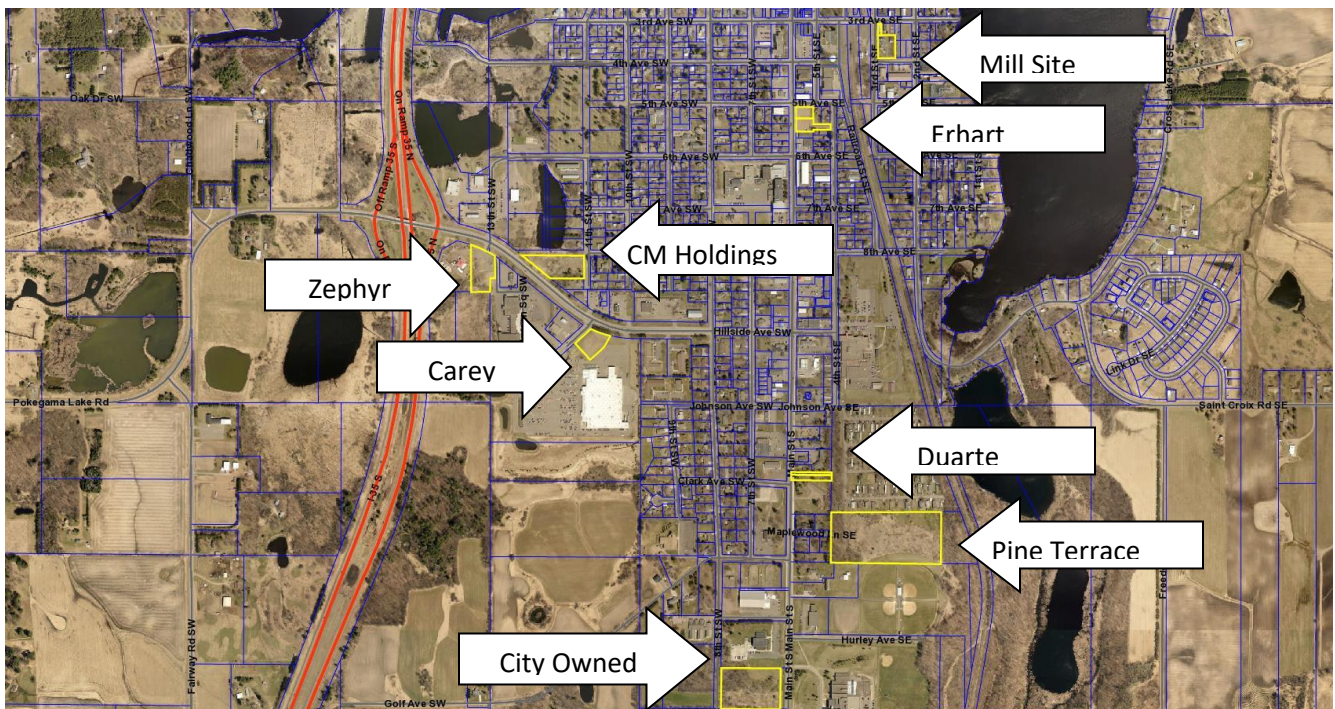




Business Corridor – Vacant Land

PID	Description/Address	Owner	Size	Other	Zoning
42.0014.000	Pine Terrace	Pine Terrace LTD Partnership	10.28 acres	No street access due to Maplewood closure – City can pursue eminent domain for access	Mobile Home Park
42.0018.001	Main Street S	John Duarte	0.19 acres	Should be combined with PID 42.0026.000	Mixed Use
42.0026.000	Main Street S	John Duarte	0.49 acres	Should be combined with PID 42.0018.001	Mixed Use
42.0199.000	Hillside Avenue	Zephyr Group, LLP	1.56 acres	East of Best Rentals	Highway Business
42.0226.000	Hillside Avenue	CM Points Holdings, LLC	2.01 acres	West of Dental Office	General Business
42.0233.001	Corner of Evergreen Square & Hillside Avenue	Randy & Beau Carey	1.03 acres	Lots of traffic to and from Walmart	General Business
42.5186.000 & 42.5188.000	Former Feed Mill site	City of Pine City	0.75 acres	City desires housing to be developed here	Mixed Use
42.5346.000 & 42.5347.000	Former Bumper to Bumper site	Erhart Properties, LLC	0.9 acres		Central Business District
42.6294.000	Main Street S	City of Pine City	4.74 acres	Steep slopes & potential wetland mitigation needed	General Business District



City of Pine City

315 Main Street South, Suite 100, Pine City, Minnesota 55063-1619 | Phone: 320.629.2575 | Fax: 320.629.6081
 E-mail: mgainor@pinecitygov.com | Website: pinecity.govoffice.com